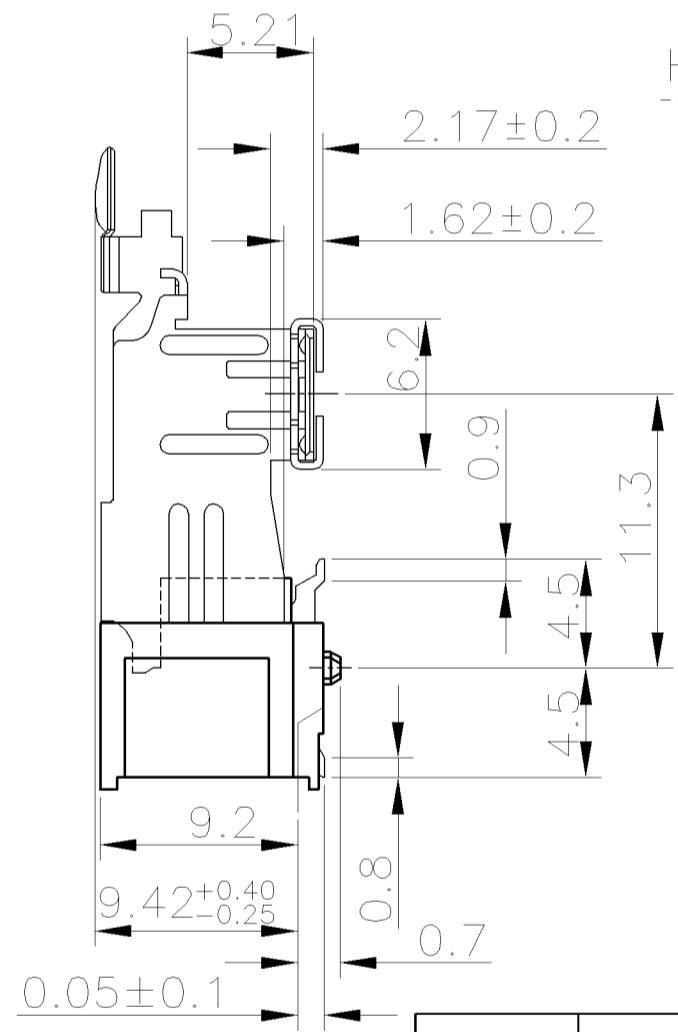
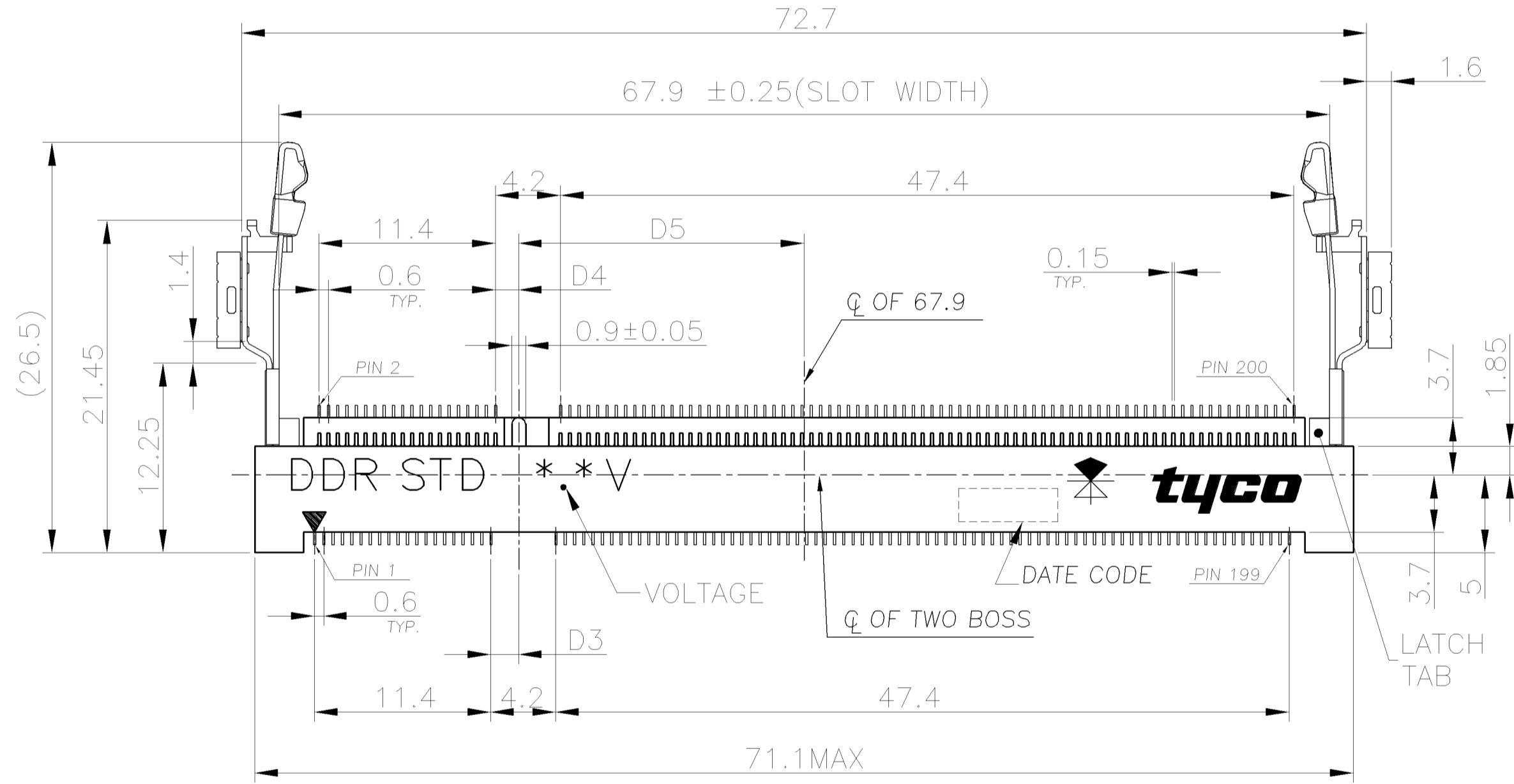
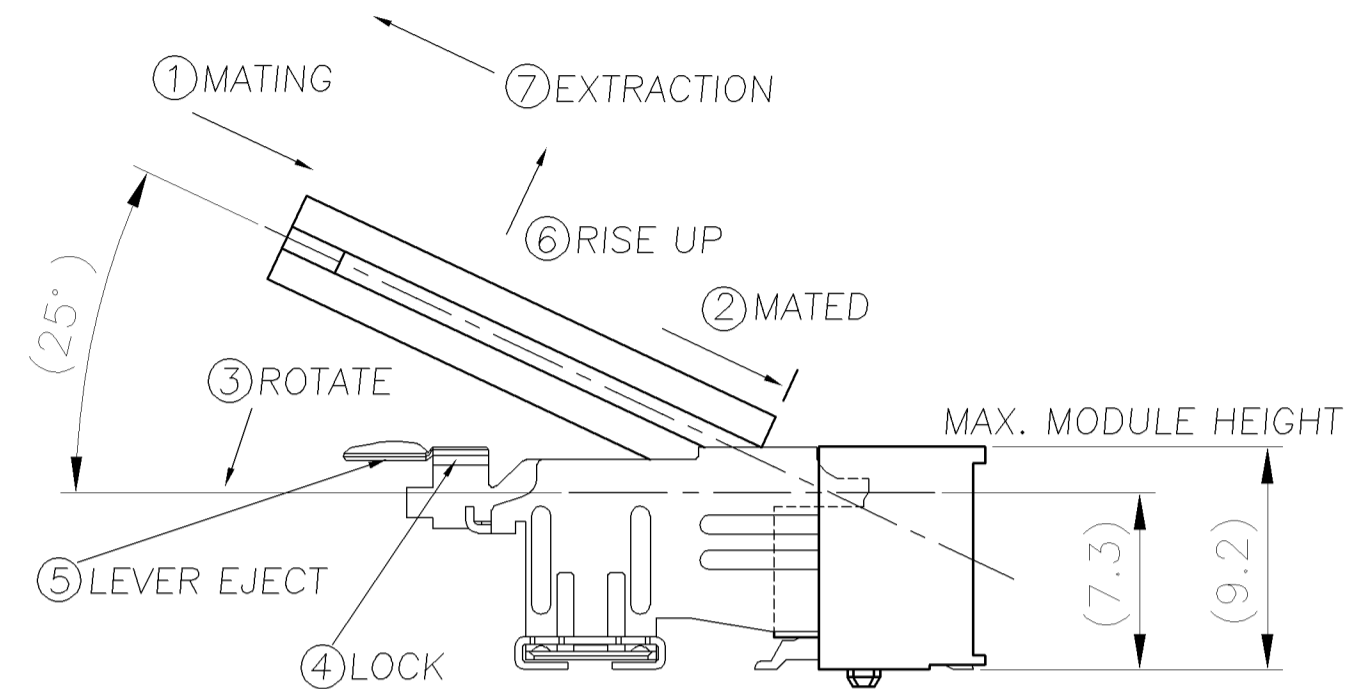
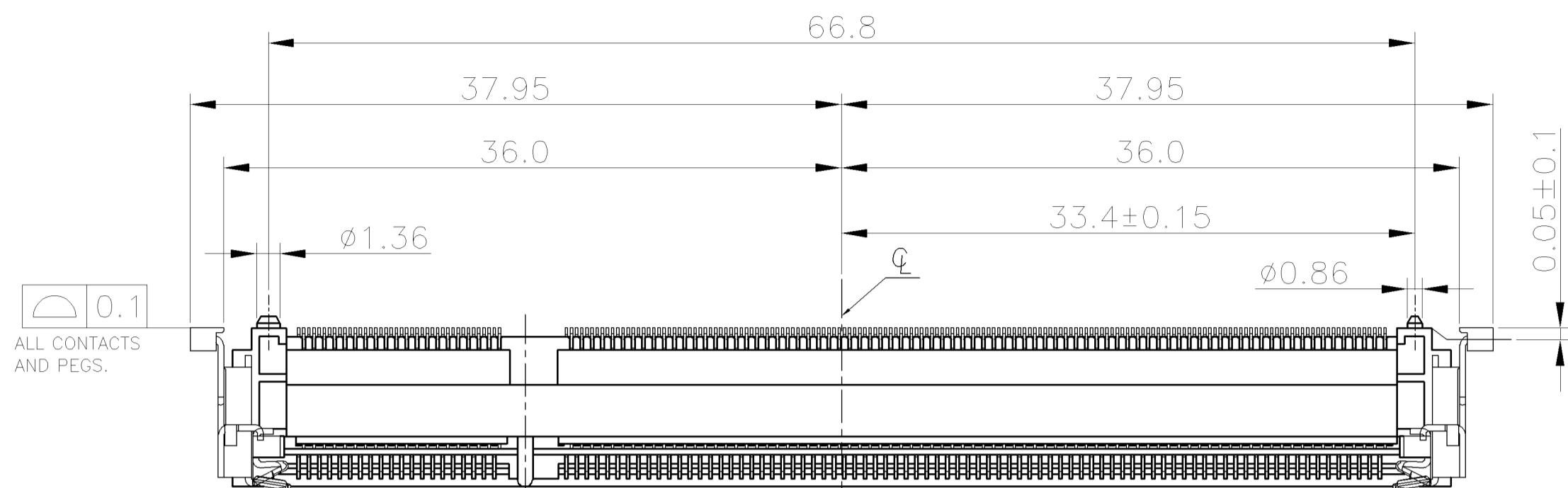


LOC	DIST	REVISIONS					
DW	-	P	LTR	DESCRIPTION	DATE	DWN	APVD
		D1		ECR-07-021051, ADD P/N: 2-5, 2-4, 2-6	06SEP07	SH	WK



HOW TO MATE AND UNMATE
 MATE: ① → ④
 UNMATE: ⑤ → ⑦

NOTE:
 1.MATERIAL:
 HOUSING: THERMOPLASTIC(LCP), BLACK COLOR UL94V-0
 CONTACT: COPPER-ZINC-TIN.
 LATCH: STAINLESS STEEL
 SOLDER PEG: BRASS
 2.FINISH:
 CONTACT :
 0.05µm[2µ"]MIN. GOLD PLATED OR
 0.76µm[30µ"]MIN. GOLD PLATED ON CONTACT AREA,
 0.38µm[15µ"]MIN. GOLD PLATED ON CONTACT AREA,
 0.05µm[2µ"]MIN. GOLD PLATED ON SOLDER TAIL,
 1.27µm[50µ"]MIN. NICKEL UNDERPLATING ALL OVER.
 SOLDER PEG:
 2.03µm[80µ"]MIN. BRIGHT TIN PLATED,
 1.27µm[50µ"]MIN. NICKEL UNDERPLATING ALL OVER.
 3. REFLOW SOLDER CAPABLE TO 260°C PER TE SPEC. 109-201, CONDITION B.

STANDARD TYPE

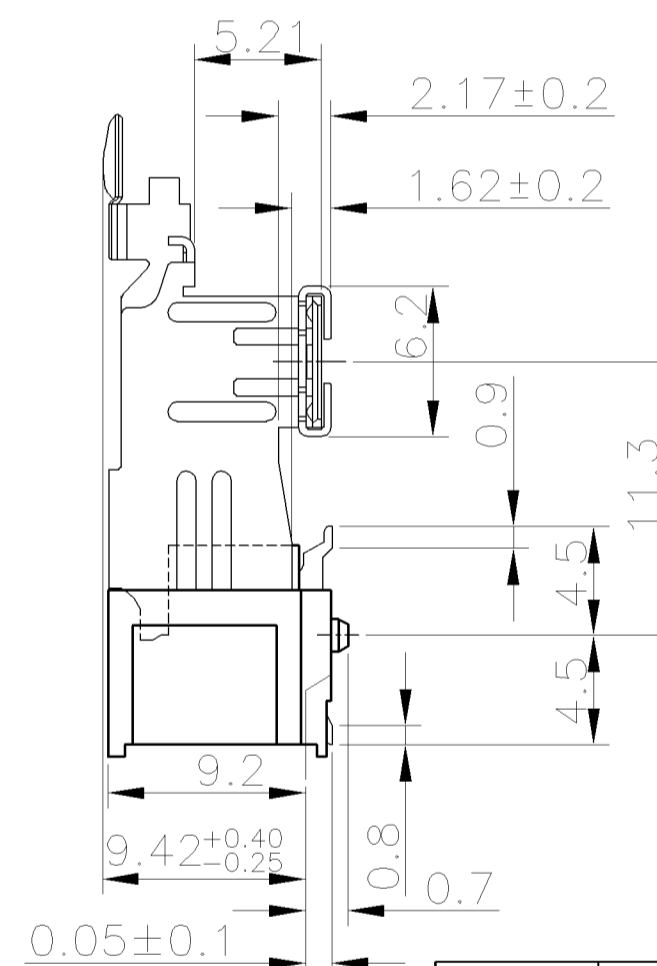
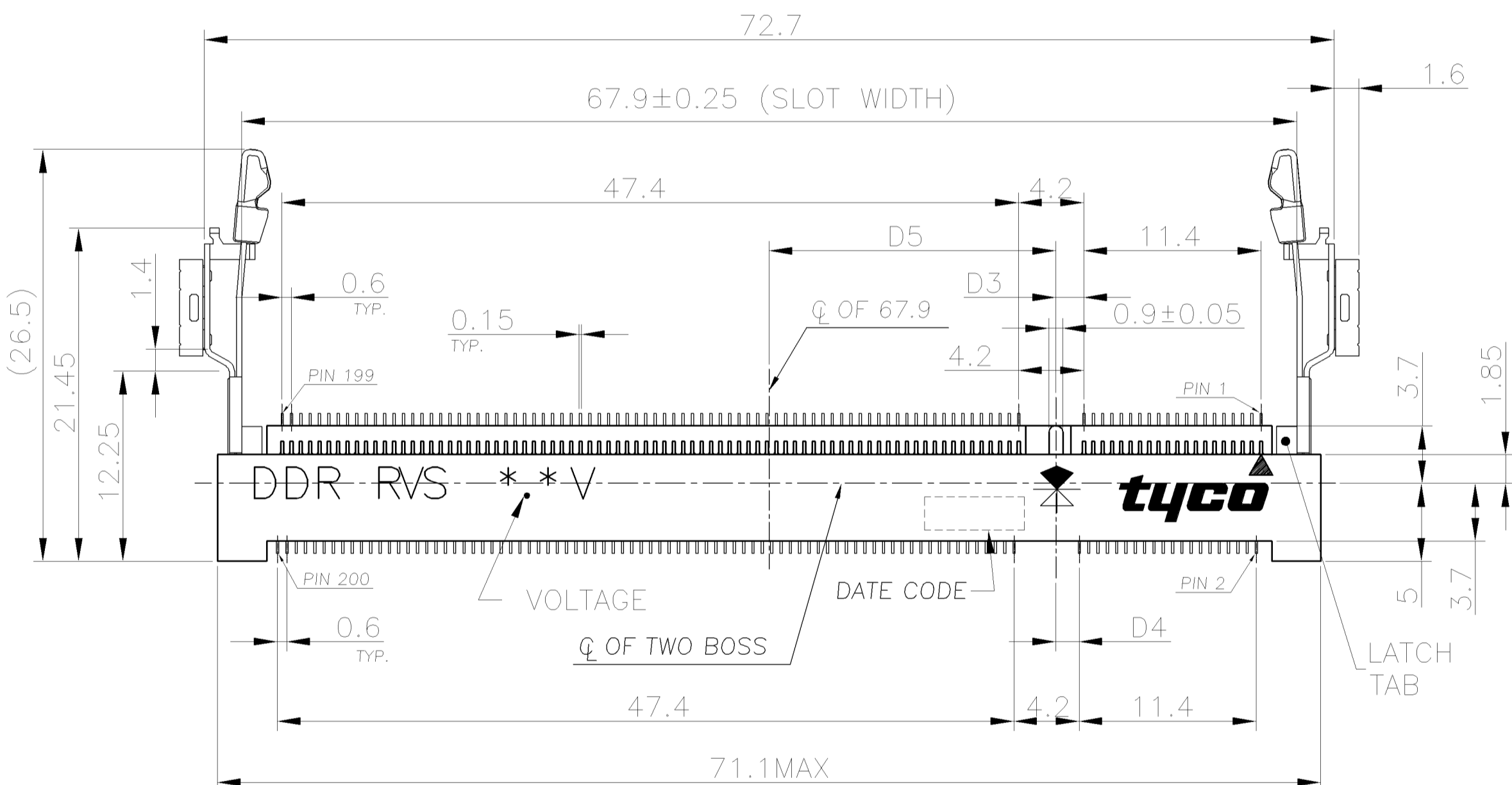
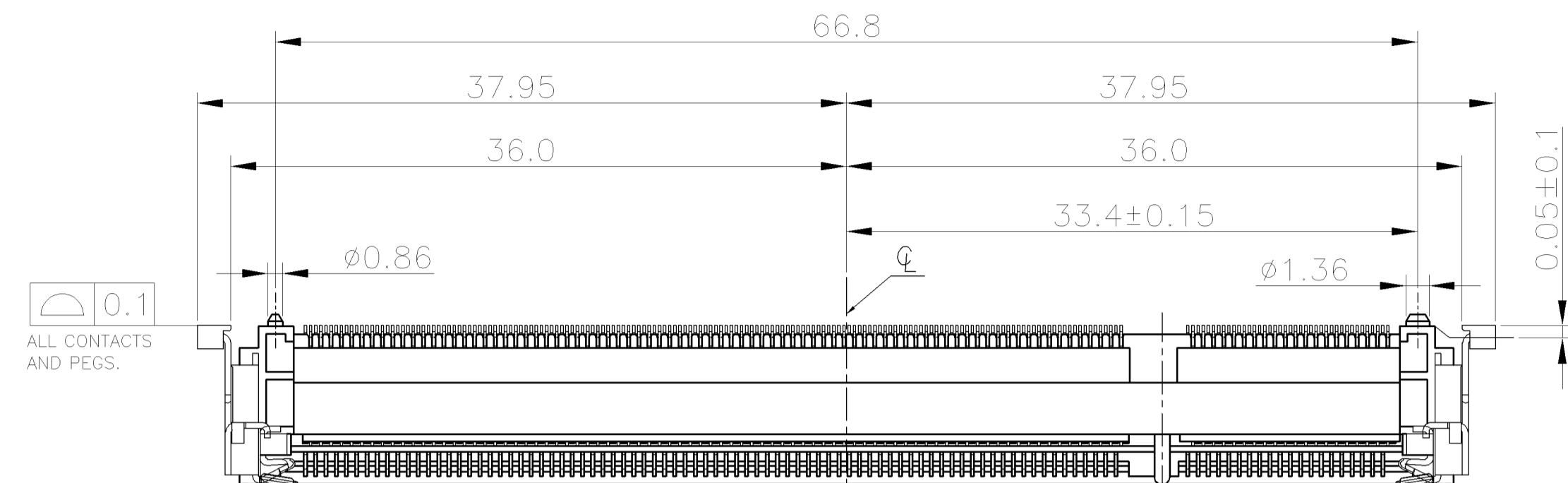
WITHOUT	1.8	17.55	2.4	2.7	TAPE REEL	A2-1734073-5
					TAPE REEL	A2-1734073-3
					TAPE REEL	2-1734073-1
					HARD TRAY	1-1734073-1
WITH	2.5	18.45	1.5	1.8	TAPE REEL	4-1734073-1
					HARD TRAY	3-1734073-1
LATCH TAB	VOLTAGE	D5	D4	D3	PACKAGE TYPE	PART NUMBER

THIS DRAWING IS A CONTROLLED DOCUMENT.		DWN	S. HOU	06SEP2007	Tyco Electronics Corporation Taipei, Taiwan	
DIMENSIONS: MM		CHK	W.J. KE	06SEP2007	NAME	
TOLERANCES UNLESS OTHERWISE SPECIFIED:		APVD	W.J. KE	06SEP2007	DDR S.O. DIMM SOCKET, 200P, 9.2 HEIGHT, SMT.	
0 PLC ± 0.3		PRODUCT SPEC		108-57382		
1 PLC ± 0.25		QUALIFICATION TEST REPORT		501-57415		
2 PLC ± 0.12		WEIGHT		5.2 GRAMS		
3 PLC ± 0.05		SIZE		A3		
4 PLC ± -		CAGE CODE		00779		
ANGLES ± 3°		DRAWING NO		C-1734073		
FINISH		RESTRICTED TO		-		
SEE NOTE		SCALE		-		
SEE NOTE		SHEET		1 OF 7		
CUSTOMER DRAWING		REV		D1		

LOC DW DIST -

REVISIONS

P	LTR	DESCRIPTION	DATE	DWN	APVD
		SEE SHEET 1			



REVERSE TYPE

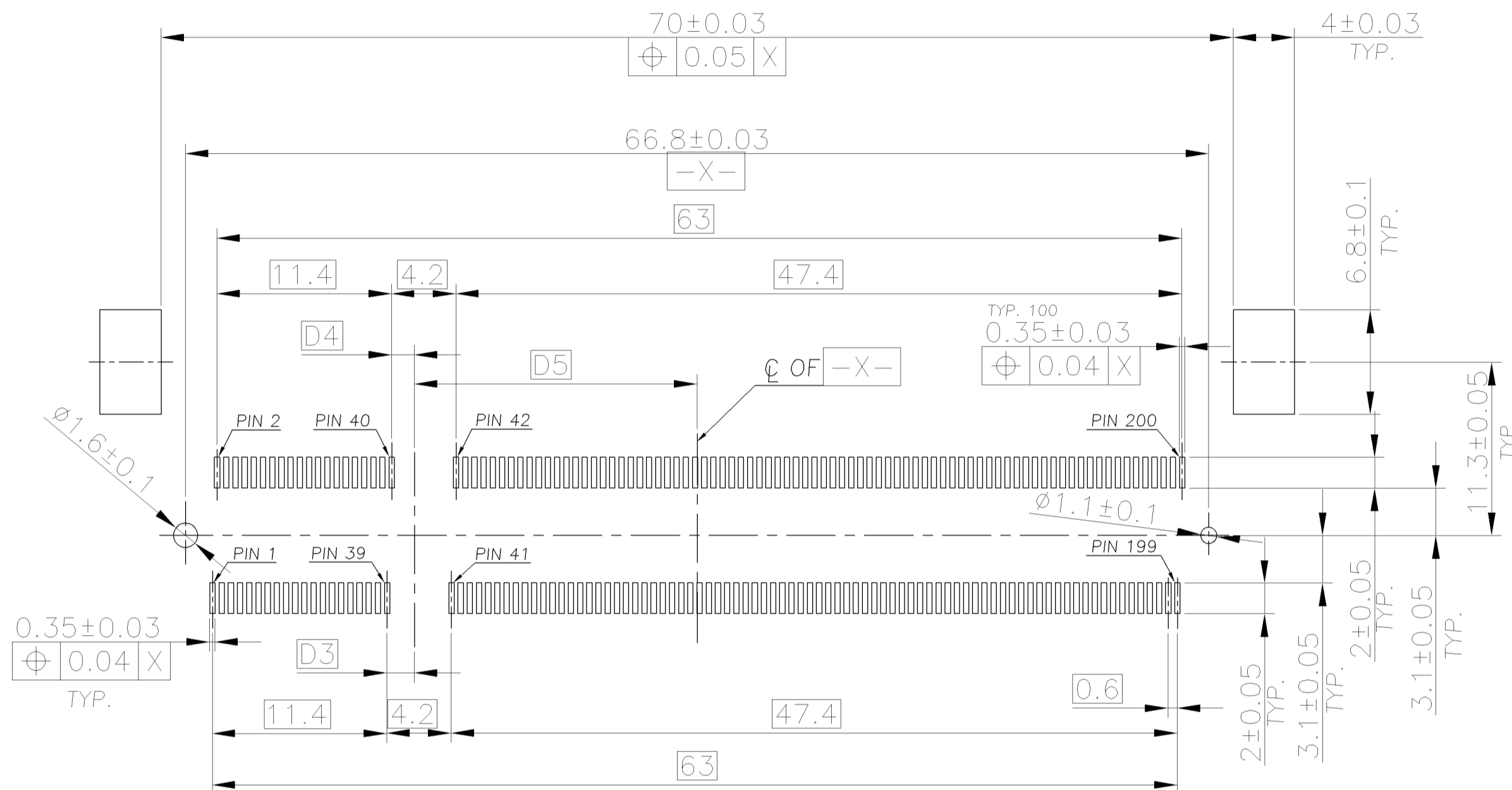
LATCH TAB	VOLTAGE	D5	D4	D3	PACKAGE TYPE	PART NUMBER
WITHOUT	1.8	17.55	2.4	2.7	TAPE REEL	A2-1734073-6
					TAPE REEL	A2-1734073-4
					TAPE REEL	2-1734073-2
					HARD TRAY	1-1734073-2
WITH	2.5	18.45	1.5	1.8	TAPE REEL	4-1734073-2
					HARD TRAY	3-1734073-2

THIS DRAWING IS A CONTROLLED DOCUMENT.		DWN S. HOU 06SEP2007	Tyco Electronics Corporation Taipei, Taiwan		
DIMENSIONS: MM		CHK W.J. KE 06SEP2007	NAME		
TOLERANCES UNLESS OTHERWISE SPECIFIED:		APVD W.J. KE 06SEP2007	DDR S.O. DIMM SOCKET, 200P, 9.2 HEIGHT, SMT.		
0 PLC ± 0.3		PRODUCT SPEC	SIZE	CAGE CODE	DRAWING NO
1 PLC ± 0.25			A3	00779	C-1734073
2 PLC ± 0.12		QUALIFICATION TEST REPORT	RESTRICTED TO		
3 PLC ± 0.05			-		
4 PLC ± -			WEIGHT	SCALE	SHEET
ANGLES ± 3°			5.2 GRAMS	-	2 OF 7
MATERIAL SEE NOTE		FINISH SEE NOTE	REV D1		
		CUSTOMER DRAWING			

THIS DRAWING IS UNPUBLISHED. RELEASED FOR PUBLICATION AUG ,2006.

© COPYRIGHT - BY TYCO ELECTRONICS CORPORATION. ALL RIGHTS RESERVED.

LOC DW	DIST -	REVISIONS			
P	LTR	DESCRIPTION	DATE	DWN	APVD
		SEE SHEET 1			



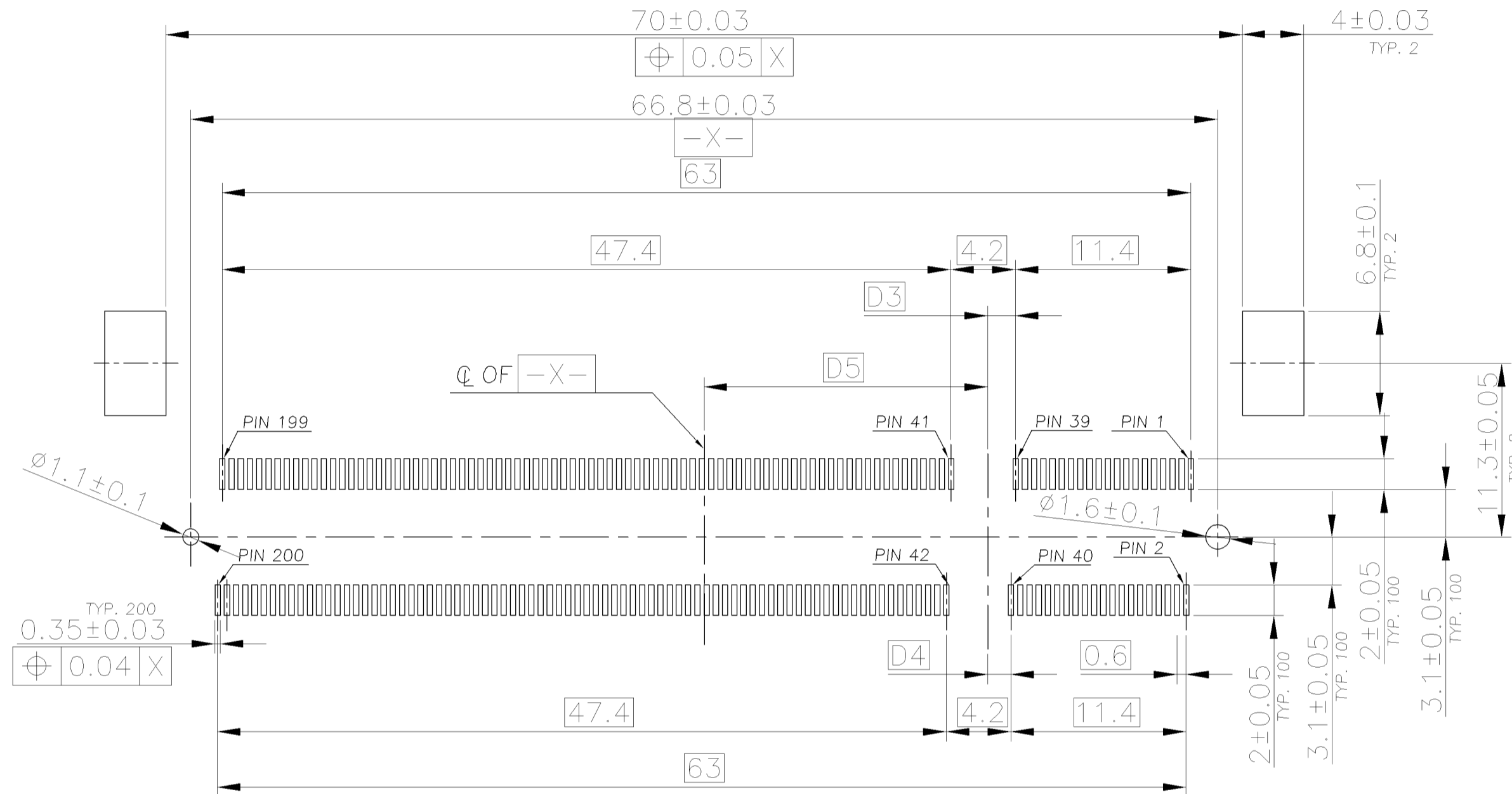
RECOMMENDED PCB LAYOUT
CONNECTOR MOUNTING SIDE

STANDARD TYPE

18.45	1.5	1.8	2.5V
17.55	2.4	2.7	1.8V
D5	D4	D3	PWR. SUP.

THIS DRAWING IS A CONTROLLED DOCUMENT.		DWN S. HOU	06SEP2007	Tyco Electronics Corporation Taipei, Taiwan													
DIMENSIONS: MM		CHK W.J. KE	06SEP2007														
TOLERANCES UNLESS OTHERWISE SPECIFIED:		APVD W.J. KE	06SEP2007	NAME													
<table border="0"> <tr><td>0 PLC</td><td>± 0.3</td></tr> <tr><td>1 PLC</td><td>± 0.25</td></tr> <tr><td>2 PLC</td><td>± 0.12</td></tr> <tr><td>3 PLC</td><td>± 0.05</td></tr> <tr><td>4 PLC</td><td>± -</td></tr> <tr><td>ANGLES</td><td>± 3°</td></tr> </table>		0 PLC	± 0.3	1 PLC	± 0.25	2 PLC	± 0.12	3 PLC	± 0.05	4 PLC	± -	ANGLES	± 3°	PRODUCT SPEC		DDR S.O. DIMM SOCKET, 200P, 9.2 HEIGHT, SMT.	
0 PLC	± 0.3																
1 PLC	± 0.25																
2 PLC	± 0.12																
3 PLC	± 0.05																
4 PLC	± -																
ANGLES	± 3°																
MATERIAL SEE NOTE		FINISH SEE NOTE		QUALIFICATION TEST REPORT	RESTRICTED TO												
		WEIGHT -		SIZE A3	CAGE CODE 00779												
		CUSTOMER DRAWING		DRAWING NO G-1734073	REV D1												
		SCALE -		SHEET 3 OF 7													

P	LTR	DESCRIPTION	DATE	DWN	APVD
		SEE SHEET 1			



RECOMMENDED PCB LAYOUT
CONNECTOR MOUNTING SIDE

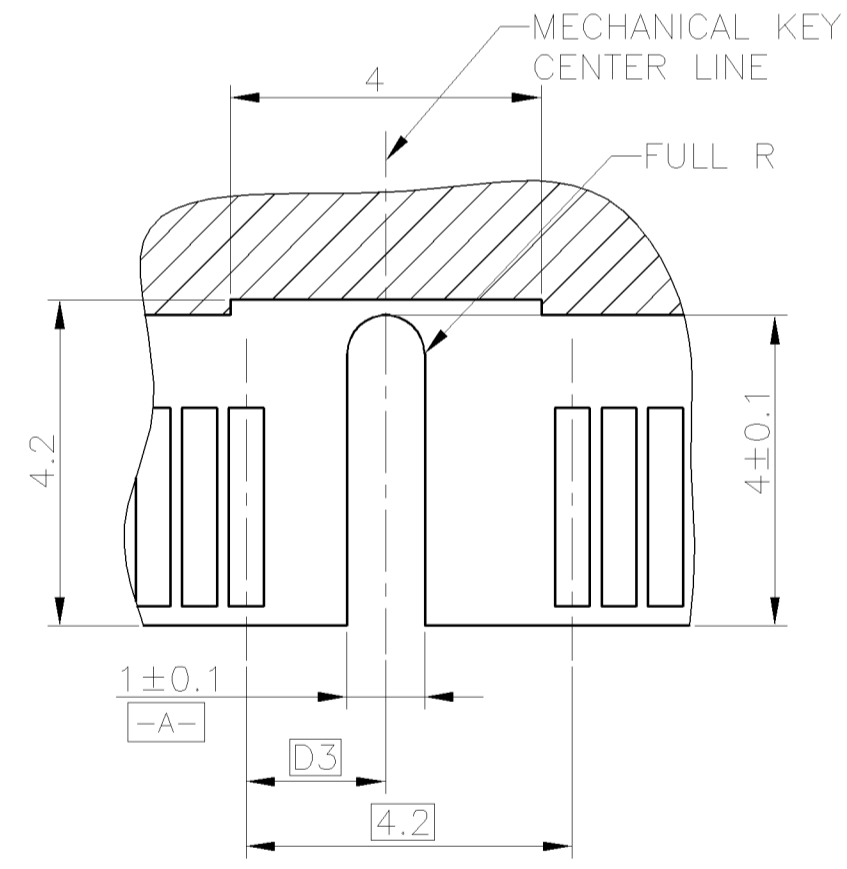
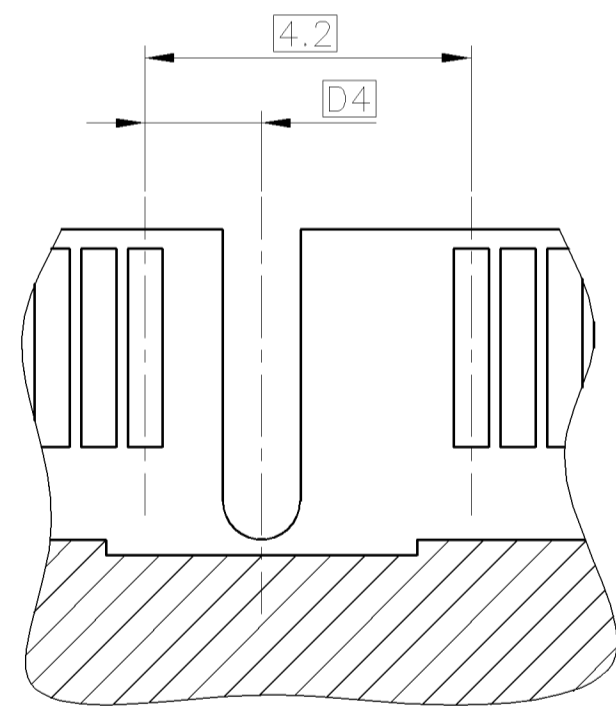
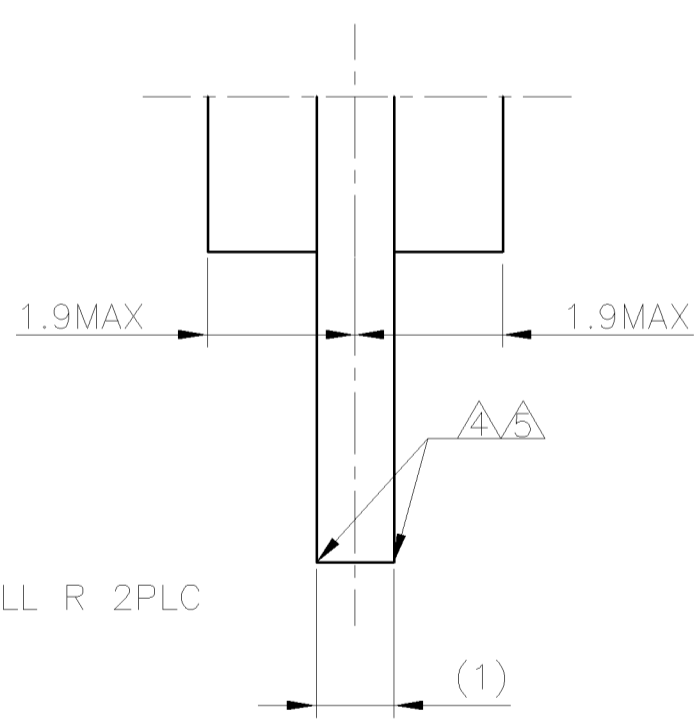
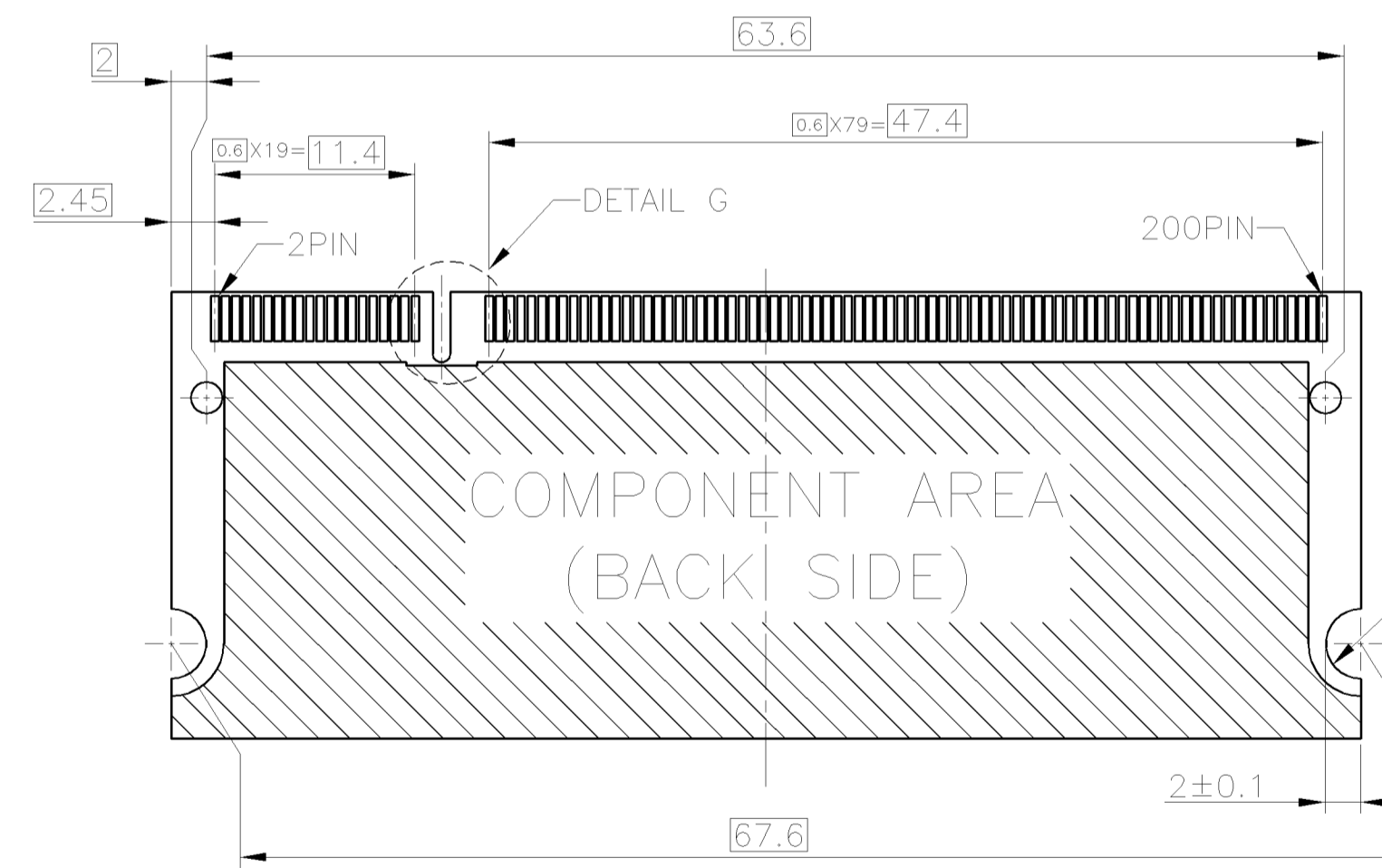
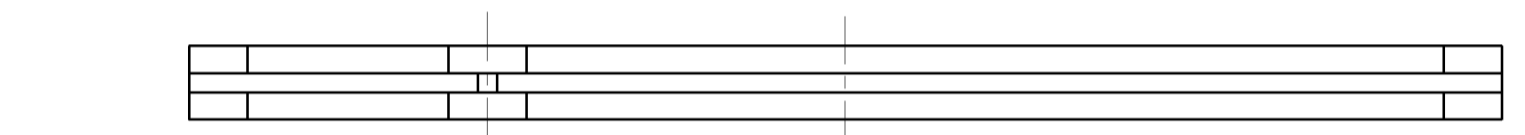
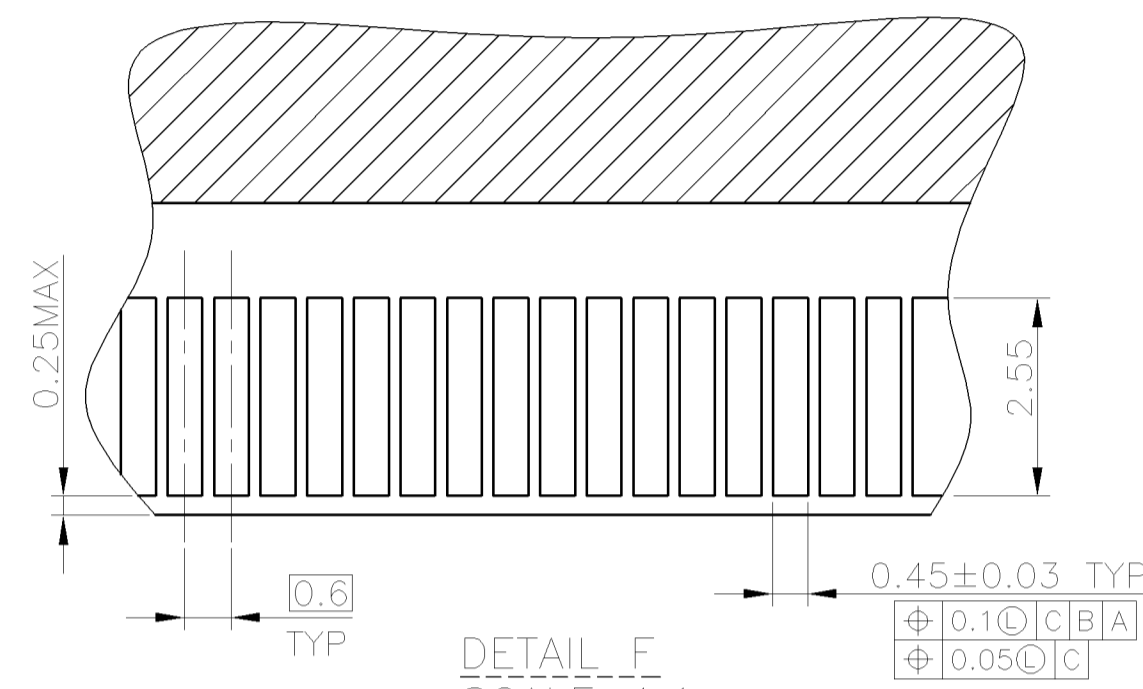
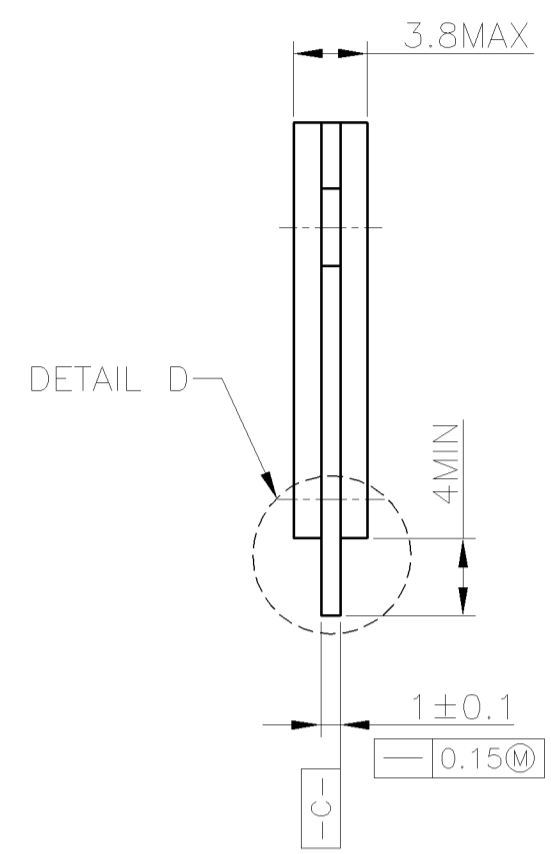
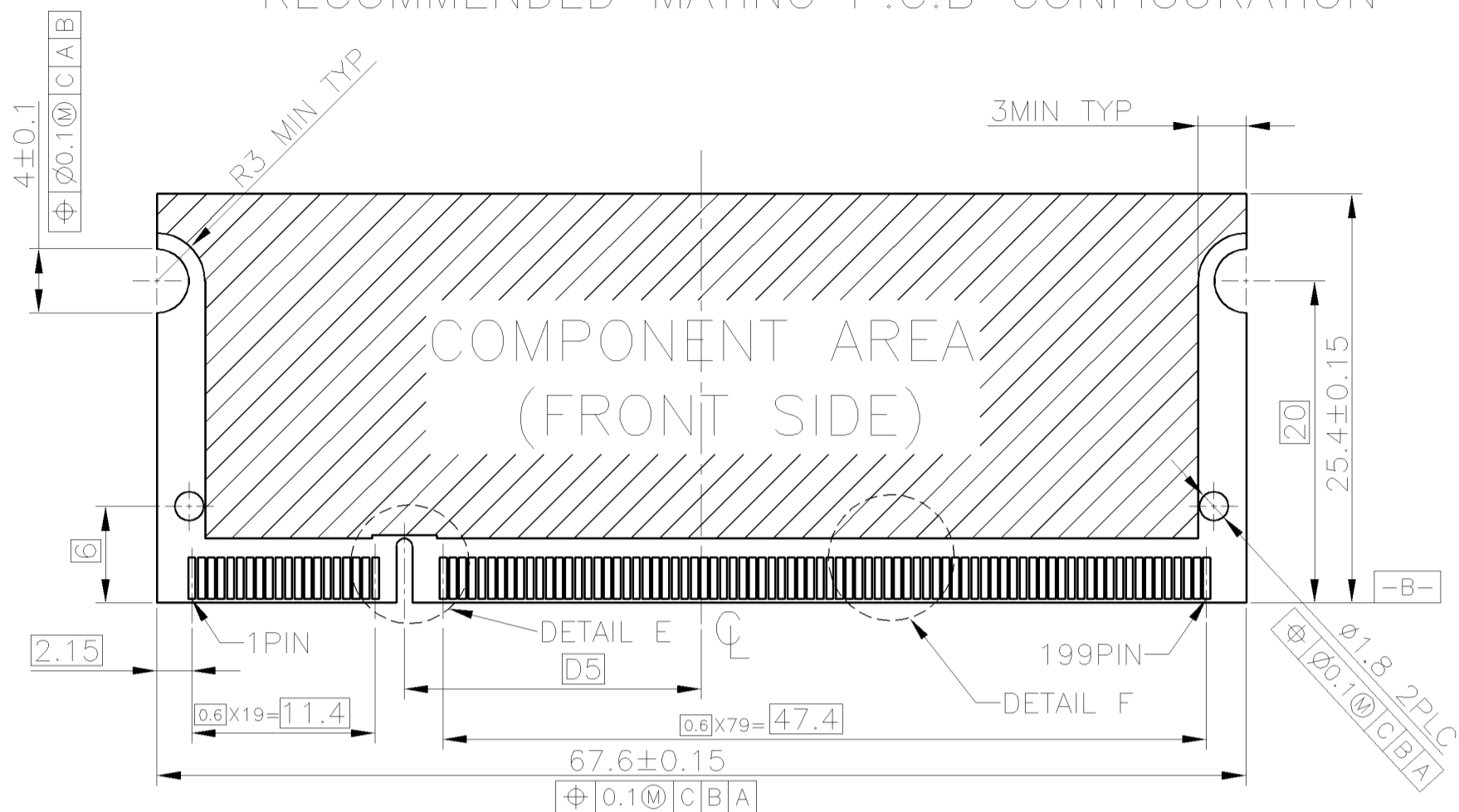
REVERSE TYPE

18.45	1.5	1.8	2.5V
17.55	2.4	2.7	1.8V
D5	D4	D3	PWR. SUP.

THIS DRAWING IS A CONTROLLED DOCUMENT.		DWN S. HOU 06SEP2007	Tyco Electronics Corporation Taipi, Taiwan	
DIMENSIONS: MM	TOLERANCES UNLESS OTHERWISE SPECIFIED:	CHK W.J. KE 06SEP2007	NAME	
	0 PLC ± 0.3	APVD W.J. KE 06SEP2007	DDR S.O. DIMM SOCKET, 200P, 9.2 HEIGHT, SMT.	
	1 PLC ± 0.25	PRODUCT SPEC	SIZE	CAGE CODE
	2 PLC ± 0.12	QUALIFICATION TEST REPORT	DRAWING NO	
	3 PLC ± 0.05		RESTRICTED TO	
	4 PLC ± -		A300779 C=1734073	
	ANGLES ± 3°	WEIGHT -	SCALE -	SHEET 4 OF 7
MATERIAL SEE NOTE	FINISH SEE NOTE	CUSTOMER DRAWING		REV D1

LOC DW	DIST —	REVISIONS		
P	LTR	DESCRIPTION	DATE	DWN APVD
		SEE SHEET 1		

RECOMMENDED MATING P.C.B CONFIGURATION



DETAIL D SCALE 4:1

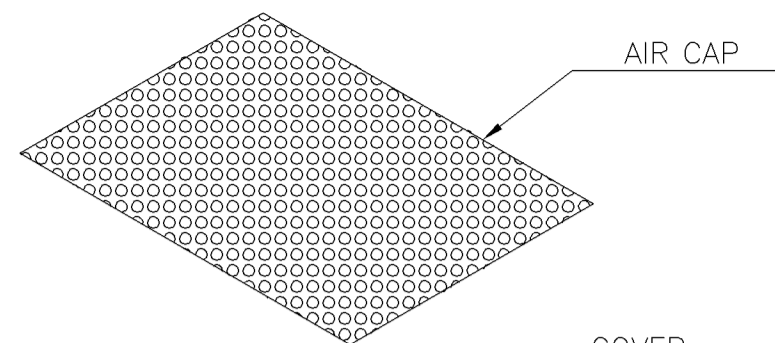
DETAIL G SCALE 4:1 (BACK SIDE)

DETAIL E SCALE 4:1 (FRONT SIDE)

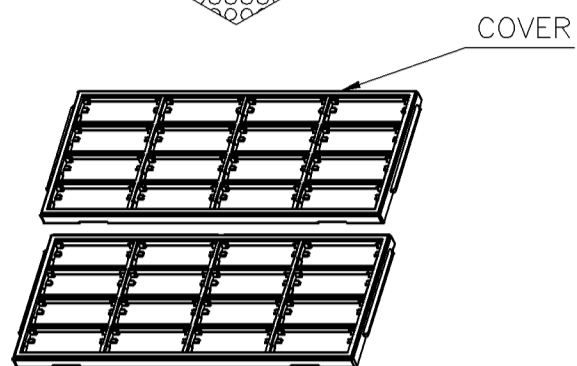
NOTE:
 (APPLIED TO SHEET 3)
 1. TOLERANCES ON ALL DIMENSIONS ±0.15 UNLESS OTHERWISE SPECIFIED.
 2. P.C.BOARD THICKNESS APPLIES ACROSS TABS AND INCLUDES PLATING AND/OR MENTAIZATION.
 3. FINISH OF PAD:GOLD PLATING 0.00076MIN OVER ON PLATING 0.002MIN.
 △ NO BURR
 △ CHAMFER 0.25MAX X45° IF EXIST.

THIS DRAWING IS A CONTROLLED DOCUMENT.		DWN S. HOU	06SEP2007	Tyco Electronics Corporation Taipei, Taiwan	
DIMENSIONS: MM		CHK W.J. KE	06SEP2007	NAME	
TOLERANCES UNLESS OTHERWISE SPECIFIED:		APVD W.J. KE	06SEP2007	DDR S.O. DIMM SOCKET, 200P, 9.2 HEIGHT, SMT.	
MATERIAL SEE NOTE		PRODUCT SPEC —	—	SIZE A3	CAGE CODE 00779
FINISH SEE NOTE		QUALIFICATION TEST REPORT —	—	DRAWING NO G-1734073	RESTRICTED TO —
		WEIGHT —	—	SCALE —	SHEET 5 OF 7
		CUSTOMER DRAWING		REV D1	

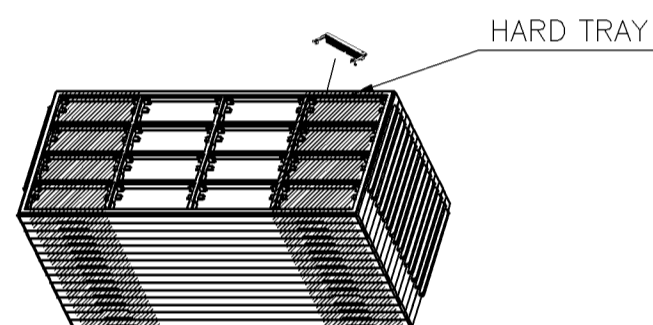
P	LTR	DESCRIPTION	DATE	DWN	APVD
		SEE SHEET 1			



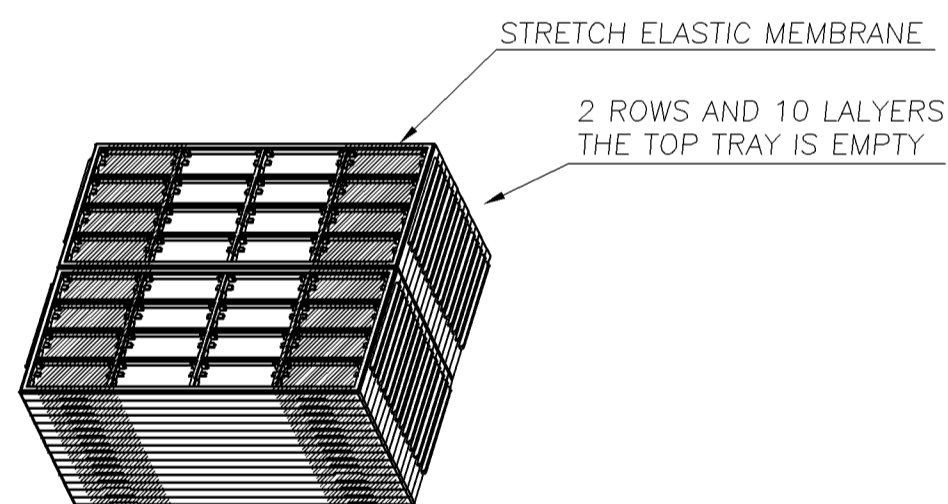
AIR CAP



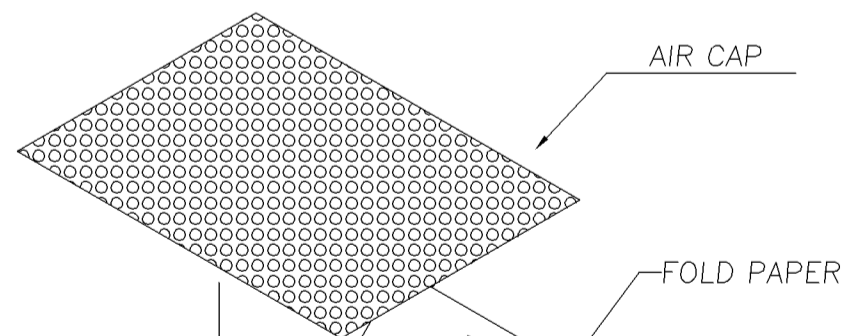
COVER



HARD TRAY

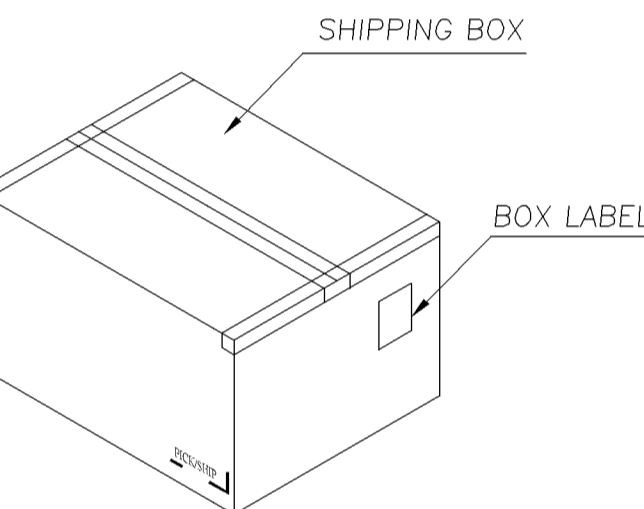
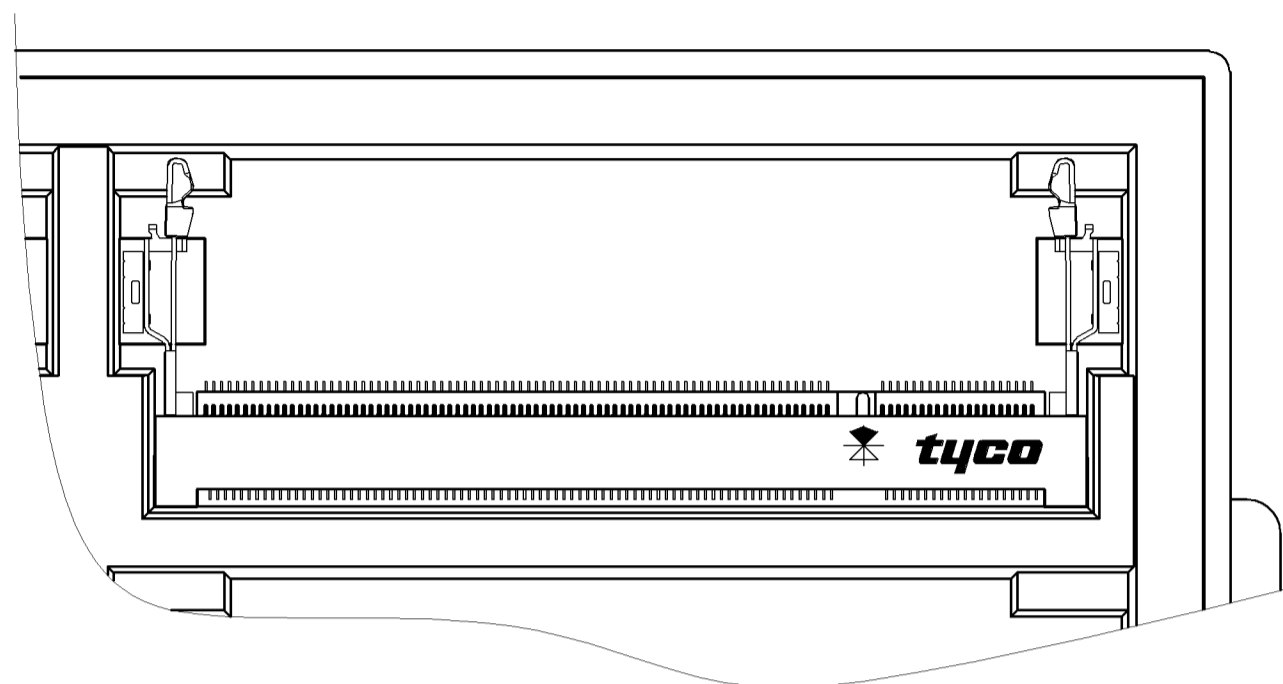


STRETCH ELASTIC MEMBRANE
2 ROWS AND 10 LALYERS
THE TOP TRAY IS EMPTY



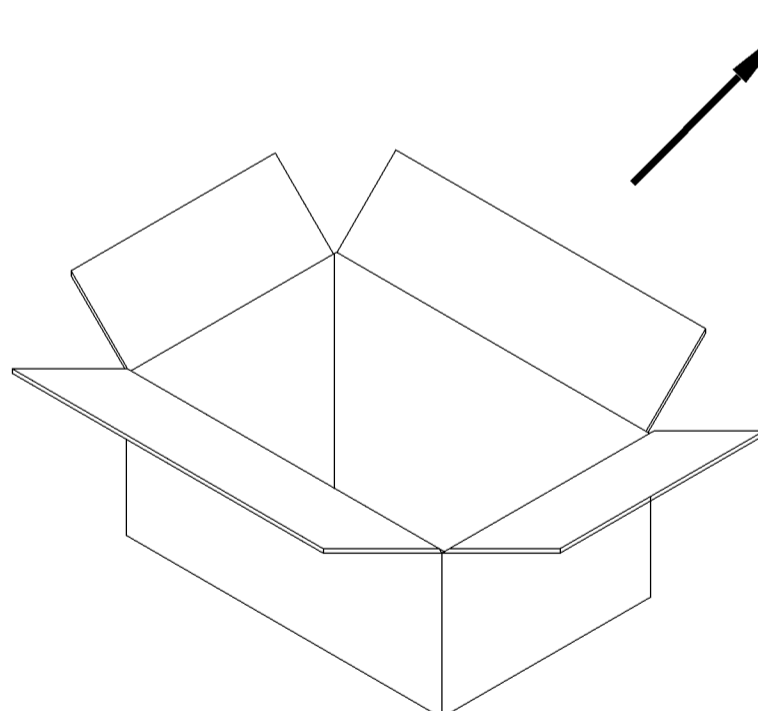
AIR CAP

FOLD PAPER



SHIPPING BOX

BOX LABEL



- NOTES :
- MATERIAL:
 - 1.1 TRAY: ABS, BLACK COLOR
 - 1.2 SHIPPING BOX: CORRUGATED FIBERBOARD
 - DIMENSION:
 - 2.1 TRAY: L=338.95, W=139, H=16.9
 - 2.1 SHIPPING BOX: L=360, W=300, H=195
 - QUANTITY:
 - 3.1 PRIMARY PACKING: 16 PCS/TRAY
 - 3.2 SECONDARY PACKING: 20 TRAY/BOX(320PCS)
 - WEIGHT:
 - 4.1 NET WEIGHT: 1.664Kg
 - 4.2 GROSS WEIGHT: 8.0Kg

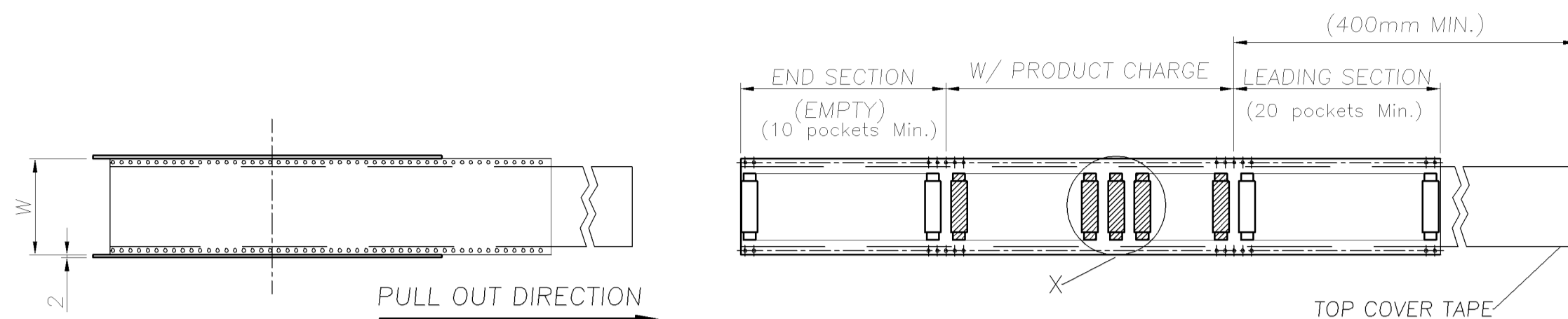
THIS DRAWING IS A CONTROLLED DOCUMENT.

DIMENSIONS: MM	TOLERANCES UNLESS OTHERWISE SPECIFIED:
	0 PLC ± -
	1 PLC ± -
	2 PLC ± -
	3 PLC ± -
	4 PLC ± -
	ANGLES ± -
MATERIAL SEE NOTE	FINISH SEE NOTE

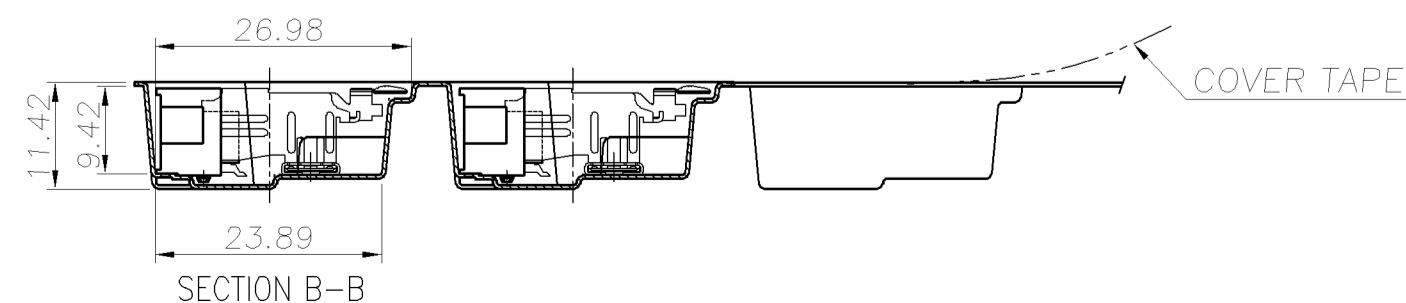
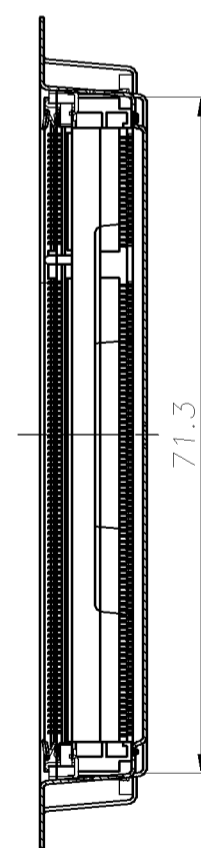
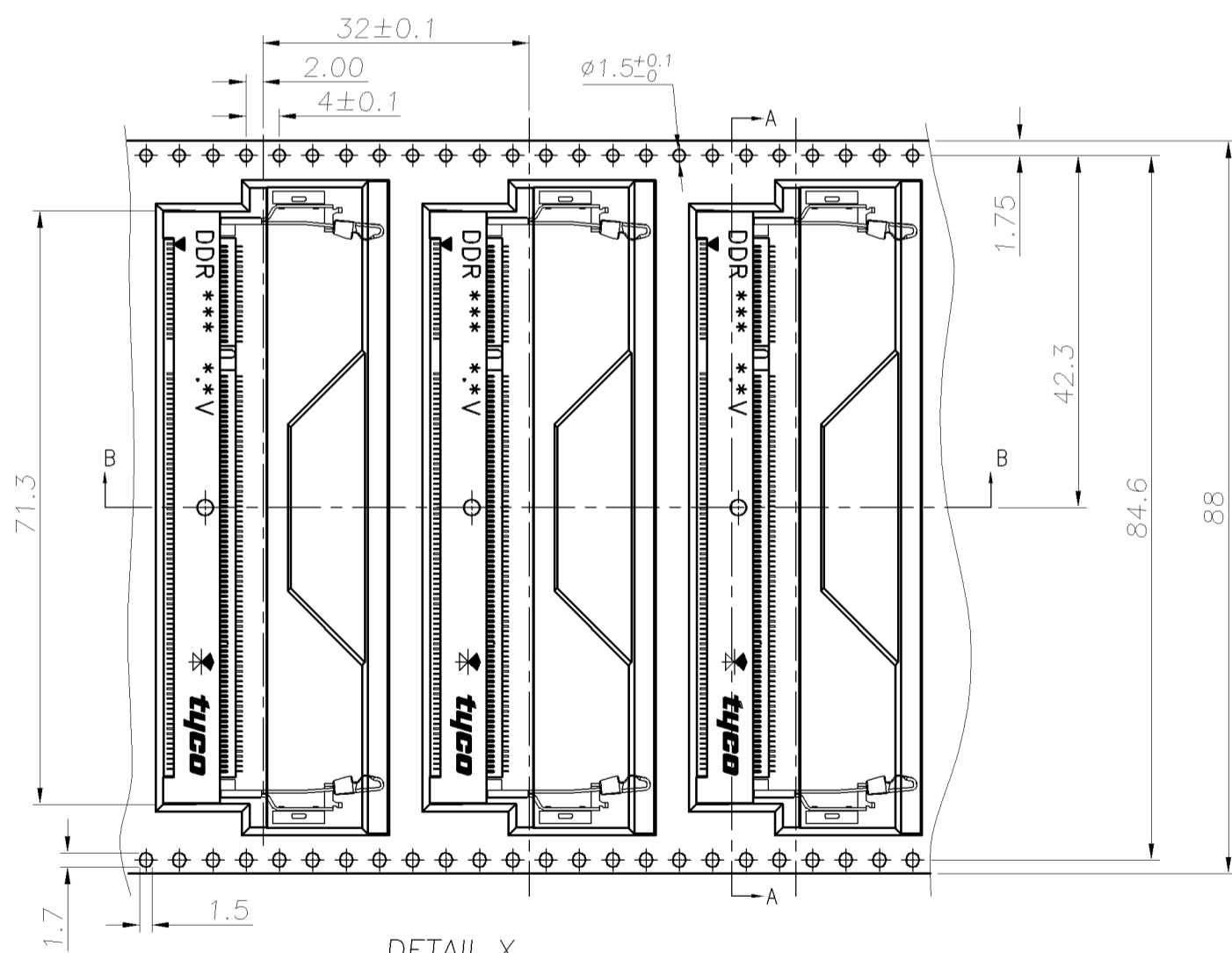
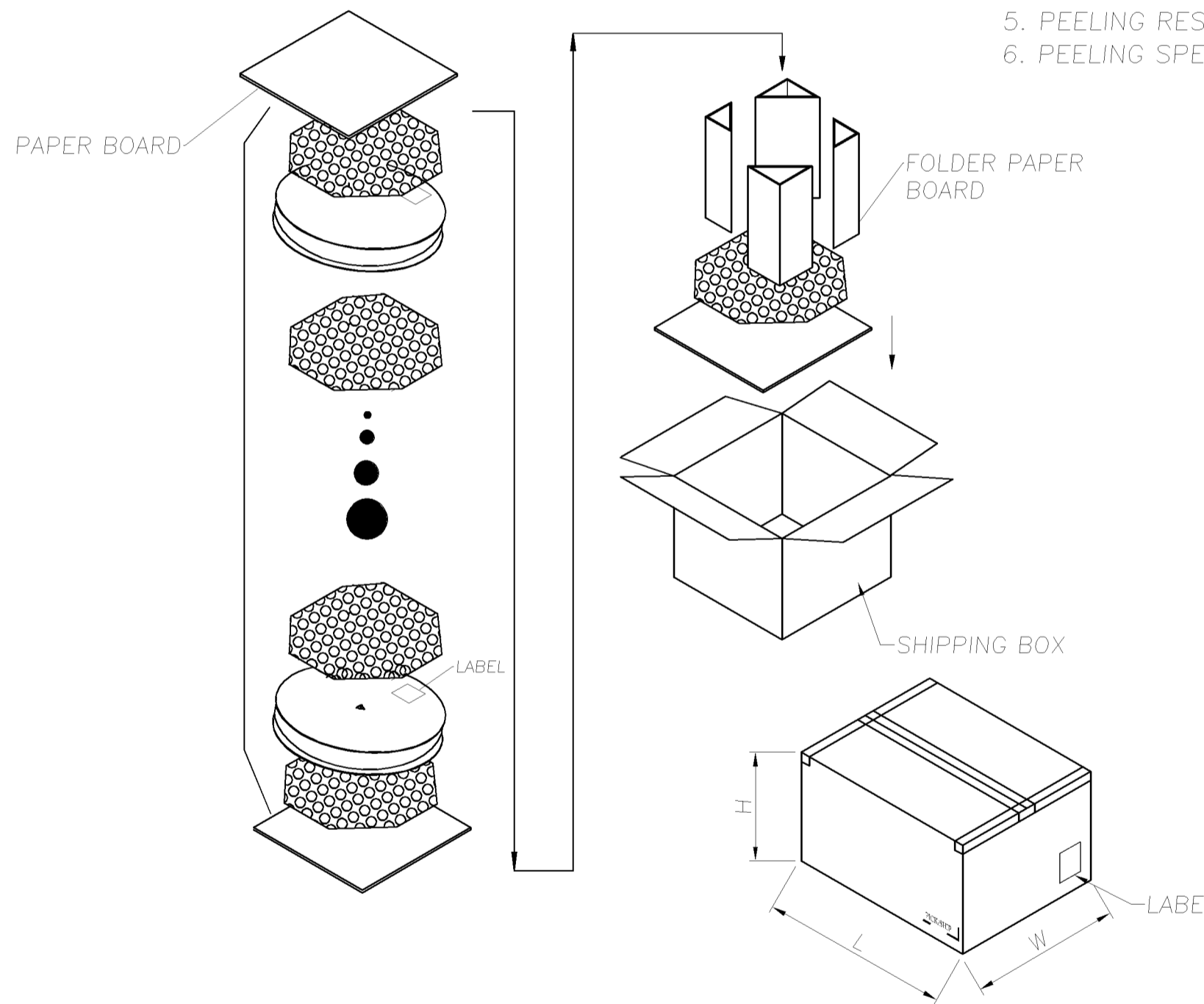
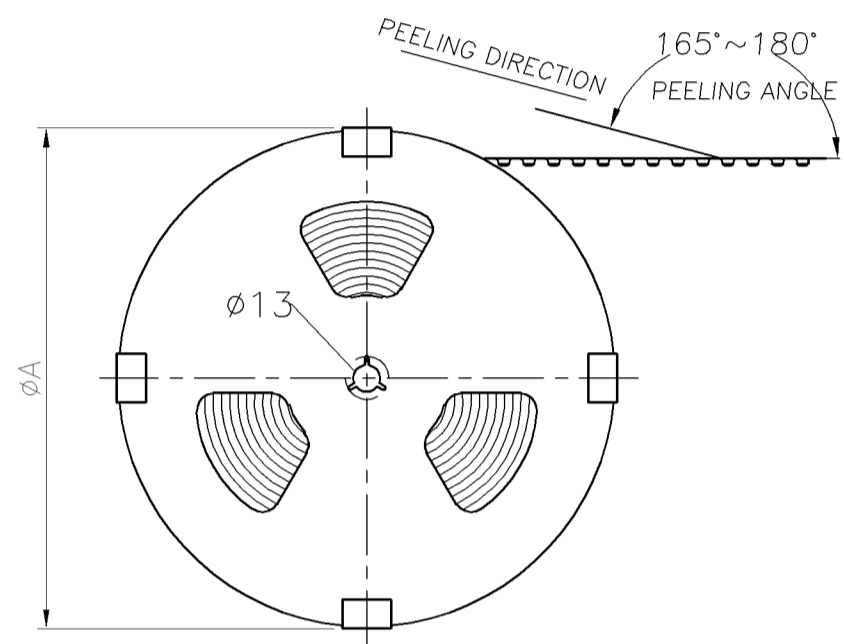
DWN	S. HOU	06SEP2007
CHK	W.J. KE	06SEP2007
APVD	W.J. KE	06SEP2007
PRODUCT SPEC	-	
QUALIFICATION TEST REPORT	-	
WEIGHT	-	
CUSTOMER DRAWING		

Tyco Electronics Corporation Taipei, Taiwan			
NAME			
DDR S.O. DIMM SOCKET, 200P, 9.2 HEIGHT, SMT.			
SIZE	CAGE CODE	DRAWING NO	RESTRICTED TO
A3	00779	C=1734073	-
SCALE -		SHEET 6 OF 7	REV D1

P	LTR	DESCRIPTION	DATE	DWN	APVD
		SEE SHEET 1			



- NOTES:
- MATERIAL :
 - EMBOSSED CARRIER: PS
 - COVER TAPE: PS
 - SHIPPING BOX: CORRUGATED FIBER
 - DIMENSION :
 - REEL: W=89.4, $\phi A=330$
 - SHIPPING BOX: L=335, W=335, H=248
 - QUANTITY :
 - PRIMARY PACKING: 150PCS/REEL
 - SECONDARY PACKING: 2 REELS/BOX(300PCS)
 - WEIGHT :
 - NET WEIGHT: 0.78Kg/REEL, 1.56Kg/BOX.
 - GROSS WEIGHT: 1.2Kg/REEL, 5.0Kg/BOX.
 - PEELING RESISTANCE: 0.1~0.7N(10.2gf~71.4gf).
 - PEELING SPEED: 300mm/minutes.



THIS DRAWING IS A CONTROLLED DOCUMENT.		DWN S. HOU 06SEP2007	Tyco Electronics Corporation Taipei, Taiwan	
DIMENSIONS: MM		CHK W.J. KE 06SEP2007	NAME	
TOLERANCES UNLESS OTHERWISE SPECIFIED:		APVD W.J. KE 06SEP2007	DDR S.O. DIMM SOCKET, 200P, 9.2 HEIGHT, SMT.	
0 PLC ± 0.3		PRODUCT SPEC	SIZE	CAGE CODE
1 PLC ± 0.25		QUALIFICATION TEST REPORT	A3	00779
2 PLC ± 0.12		—	DRAWING NO	RESTRICTED TO
3 PLC ± 0.05		—	C-1734073	—
4 PLC ANGLES ± - ± 3°		WEIGHT	SCALE	SHEET
MATERIAL SEE NOTE		FINISH SEE NOTE	—	7 OF 7
CUSTOMER DRAWING		REV	D1	